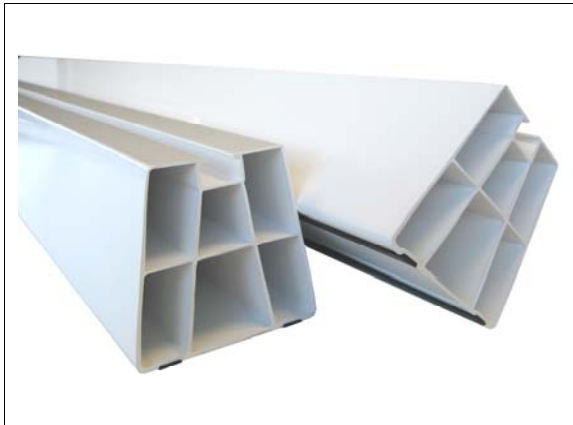


PRE-RELEASE

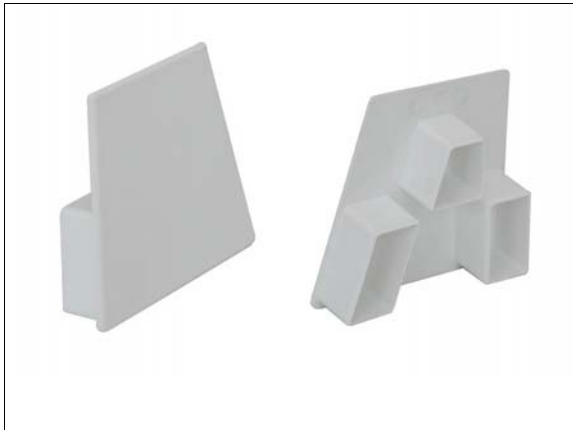
PRODUCT FEATURES



Product range: Castel AIRCO
Product category: Supports
Product group: Mountblocs

Article code: xxxx.xxxxx.xxx
Commercial ref.: EX.137 - MBM

Description: Mountbloc mini



Product range: Castel AIRCO
Product category: Supports
Product group: Mountblocs

Article code: xxxx.xxxxx.xxx
Commercial ref.: INJ.437 – MBM.ECW

Description: End cap for mountbloc mini



Product range: Castel AIRCO
Product category: Supports
Product group: Mountblocs

Article code: xxxx.xxxxx.xxx
Commercial ref.: A.12

Description: 4 plates with fixation set for mountbloc

APPLICATION

Installation of outdoor air-conditioning condensing units

MATERIAL

UV-resistant PVC

COLOURS

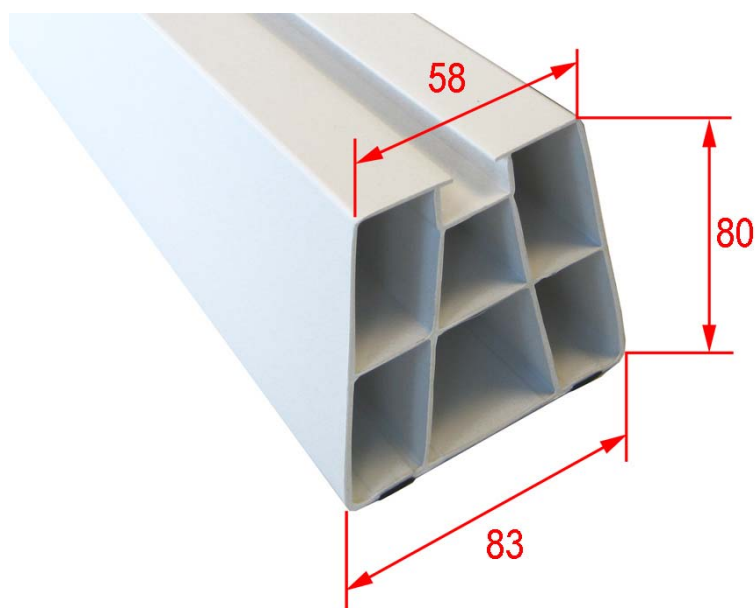
White (also available in black on request)

CHARACTERISTICS

- Recommended max. Load capacity: 150 Kg per piece
- Fixation bolts included
- Adapted to most units, fixation through sliding rail
- Quick and fast installation
- Anti-vibration stripes contributing to sound and vibration dampening
- PVC maximum temperature range between -20°C and +60°C

MEASUREMENTS

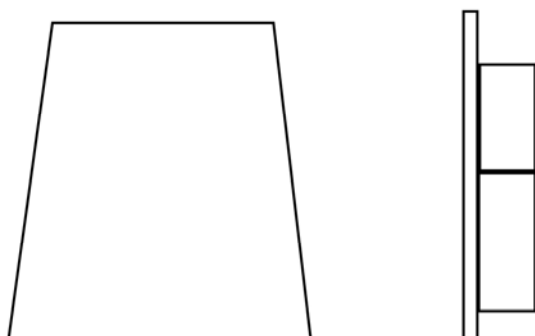
All measurements in mm



PACKING INFORMATION

Code	Length	Packing / BOX	Packing / PALLET
MBM.350W	350 mm	6 x 2 pcs	756 pcs = 63 sets
MBM.450W	450 mm	6 x 2 pcs	660 pcs = 55 sets
MBM.1000W	1000 mm	2 pcs	448 pcs = 224 sets

END CAP INJ.437 – MBM.ECW

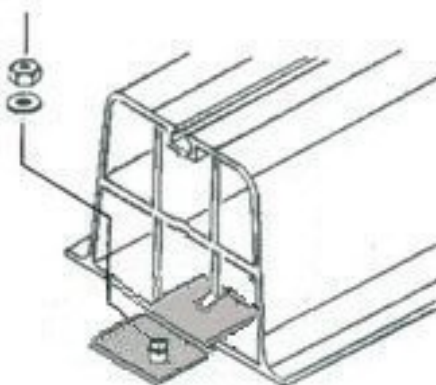


Ref.	Packing / Bag	Packing / Box
MBM.ECW	4 pcs	100 pcs

FIXATION KIT A.12

Includes:

- 4x Fixation plate
- 4x Hexagon head bolt M6 + exp.plug
- 4x washers M6



	Bag	Box		
Code	Packing	Packing	Measurement	Weight +-
A.12	4 pcs	200 pcs	38 x 25 x 17 cm	28,2 Kg

ATTACHMENTS:

Extract of the Test report carried out by Sirris Laboratories (see annex pages 1, 2, 3)

Castel Engineering, Rue de la Royenne 84, B-7700 Mouscron, Tel +32 (0) 56 33 68 40

Copyright © 2010 Castel Engineering – All rights reserved.

Those who in any way utilize the product(s) are solely responsible for determining (a) the suitability of the product for the intended use, (b) the appropriate manner of processing and maintaining the product to ensure safety and quality and (c) chemical, physical and health effects related to those activities, (d) to inform themselves in order to be able to decide if specific data are necessary for their intended use in respect to norms and regulations in application at the location of their intended use. "Performance data given in this document is provided as a guide for the user to determining suitability. Dimensions and weights are nominal and are not be used for manufacturing, even when tolerances are shown. Please read and understand this document before purchasing the product. Please contact your Castel Engineering representative if you have any questions or comments."

Unless specifically mentioned in the document, all data, whenever a notion of safety factor or safety parameter to be taken into account may implied or requested, is expressed without.

Customers, installers and third parties are solely responsible for damages or failures in performance resulting from misuse, abuse, neglect or improper handling, transporting or storage.

The qualified installer is supposed to have professional knowledge about compliance with local regulations, safety factors, choice of the installation location and product orientation, the evaluation of the supporting structure and elements, composition and surface, the adequate choice of fixing material and procedures in respect with the known climatic conditions in use and during installation.

The qualified installer is supposed to have professional knowledge about compliance with local regulations, safety factors, choice of the installation location and product orientation, the evaluation of the supporting structure and elements, composition and surface, the adequate choice of fixing material and procedures in respect with the known climatic conditions in use and during installation.

We have to suppose that the supporting structure and elements on which the product(s) will be placed is resistant enough for the intended use.

All above parameters, factors, operations, regulations, compliances, controls and procedures are totally beyond Castel Engineering sa and its Affiliates' control. By selling this product Castel Engineering sa and its Affiliates acts in a simple sale – purchase transaction.

Castel Engineering and its Affiliates disclaim any and all responsibility and liability for the use of any such data, information and/or the relevant product.

All texts, representations, illustrations and drawings included in this document are the intellectual property of Castel Engineering S.A. and are protected by copyright law. All rights reserved, including translations rights. They are intended for illustration purposes only and may not be used to invoke nor imply whatever liability or responsibility to Castel Engineering sa and its Affiliates. No part of this document may be reproduced or transmitted in any form or by means, electronic, mechanical, photocopying or otherwise, without our written consent. The information in this document has been carefully checked and is believed to be accurate, however, no responsibility is assumed for clerical or typographical or proofreading errors or omissions. Due to the evolution of standards or materials or other reasons, the characteristics indicated by text or representations or illustrations or drawings in this document are not binding for us until our services have confirmed them. All data are subject to change without notice.

Castel Engineering sa and its Affiliates shall not be responsible for any kind of acts or occurrences beyond their reasonable control, including, without limitation: lightning, flood, hurricane, tornado, electro-static or any other similar natural cause, fire, explosion, power surge or failure, water, radiation, Force Majeure, war, revolution, civil commotion or acts of civil or military authorities or public enemy's: any law, order, regulation, ordinance, or requirement of any government or legal body or any representative of any such government or legal body; or labor unrest, including without limitation, strikes, slowdowns, picketing, or boycotts.

Extract of the Test Report carried out by Sirris Laboratories

Test ref : 8-1828 / 02
Date : 14-04-2008

Climatic conditions : ambient temperature

Nature of the test : compression on "Mountbloc" profiles (type EX.83 L=450mm),
scribed in test under ref 'MBL 450'

Pg 5/10 : 2.2.1 Compression on MBL 450 profiles via 2 points
(see picture annex pg. 2)

Pg 6/10 : 2.2.2 Extract of the Table of results **without** any safety
factor taken into account

MBL 450		
Sample	F max in daN	DF Max in mm
1	355	3,50
2	365	3,60

The values in the table hereabove are according to the results reported by Sirris Labs, according to their test conditions and **without any safety factor taken into account.**

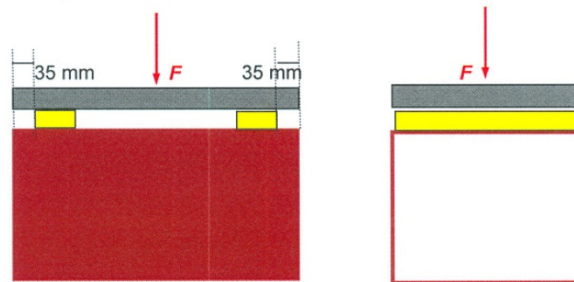
Key:

F max : maximum load (in daN) reached before the beginning of the collapse
DF max : deformation (in mm) reached at maximum load

Pg 9/10 : 2.3. Picture Material (see annex pg. 3)

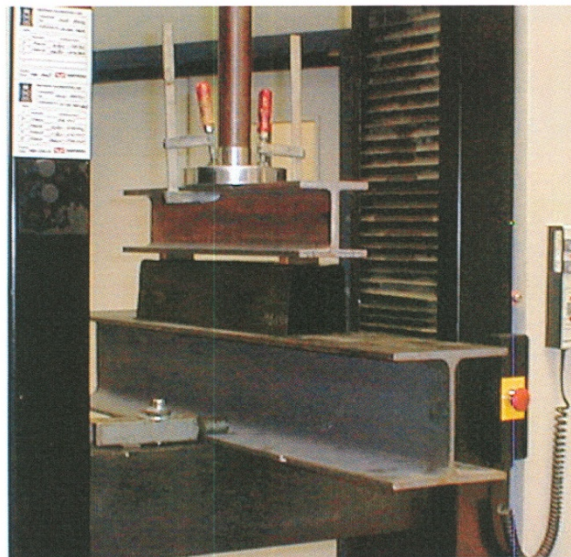
2.2. Sollicitation charge en deux points

2.2.1. Schéma de mise en sollicitation

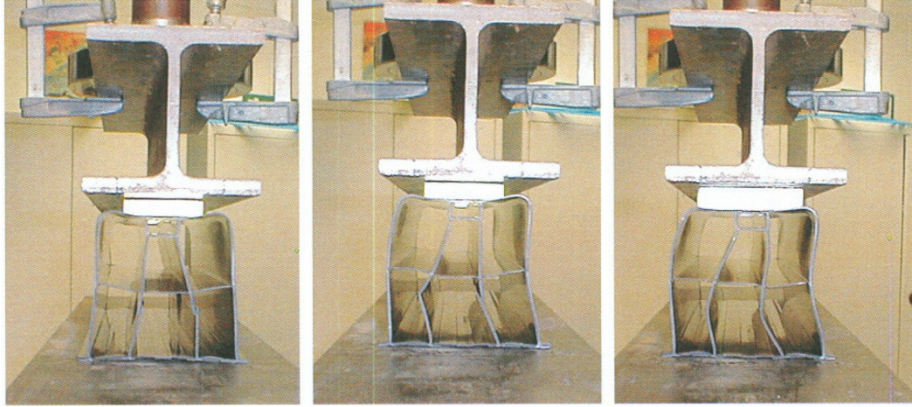


Elévation

Profil



Les deux intercalaires de (23*50)mm sont placés à 35 mm des extrémités du « Mountbloc »



Ruines « Mountblocs » MBL – 450 (deux points)